




PRELIMINARY ENGINEER'S REPORT

South Placer Fire Protection District

Fire Protection and Emergency Response Services
Assessment

Fiscal Year 2022-23



Pursuant to California Government Code Section 50078
et seq. and Article XIID of the California Constitution

Engineer of Work:



SCI Consulting Group
Public Finance Consulting Services

4745 Mangels Boulevard
Fairfield, California 94534
707.430.4300
www.sci-cg.com

South Placer Fire Protection District

Board of Directors

- Gary Grenfell, President
- Dan Bajtos, Vice President
- Sean Mullin, Clerk
- Ken Musso, Director
- Mike Johnson, Director
- Terri Ryland, Director
- Chris S. Gibson, Director

Fire Chief

- Mark Duerr, Fire Chief

Secretary of the Board

- Katherine Medeiros

Table of Contents

Introduction.....	4
Legal Analysis of Proposition 218.....	7
Assessment Process	10
Description of Services.....	12
Cost and Budget.....	16
Method of Apportionment	18
Implementation of an Assessment for Fire Protection Services	18
Overview of Special Benefits from Fire Protection Services	19
Description of Special Benefit From Fire Protection Services	20
General Versus Special Benefit	21
Calculating General Benefit.....	23
Summary of General Benefits	27
Zones of Benefit	28
Assessment Apportionment.....	28
Method of Assessment.....	28
Assessments Calculation	37
Appeals of Assessments Levied to Property	38
Additional Background on Relative Benefit	38
Criteria and Policies.....	39
Duration of Assessment	39
Assessment Funds Must Be Expended Within the South Placer FPD , Division 2 (granite bay) Area.....	39
Assessment.....	40
Assessment Diagram.....	42
Appendix A – Fire Hazard Areas Diagram	44
Appendix B – Response Areas Travel Time Diagram.....	45
Appendix C – Assessment Roll, Fiscal Year 2022-23.....	46
End Notes	47

List of Tables

Table 1 – Proposed Assessment Rates.....	6
Table 2 – current apparatus in operation	14
Table 3 – Cost and Budget	16
Table 4 – Emergency Medical Expenses Versus Overall Budget.....	27
Table 5 – Normalized Fire Risk Factors	31
Table 6 – Structure Replacement Factors.....	32
Table 7 – Benefit Summary per Property Type.....	33
Table 8 – Fire Hazard Zone Risk Factors	35
Table 9 – Travel Time Premium Factor	373
Table 10 – Summary Cost Estimate	40

Introduction

The South Placer Fire Protection District (“South Placer FPD,” “Fire District,” or “District”), was originally formed in 1952 and initially administered as part of the Citrus Heights Fire District (“CHFD”). CHFD operated as a professional fire district and provided paid administrative staff to South Placer FPD to oversee its primarily volunteer operations. In 1962, South Placer FPD formally ended its agreement with CHFD and CHFD chiefs working at South Placer FPD became South Placer FPD’s first full-time paid personnel.

In 2017, South Placer FPD and its neighboring fire department, Loomis Fire Protection District, consolidated. This consolidation helped increase efficiency and improve operations, while increasing fiscal sustainability. Although the consolidation of the two districts have been operationally complete for several years, there are some administrative remnants primarily regarding revenue and funding. One of the primary purposes of this proposed assessment is to address these remaining administrative remnants. South Placer FPD can be described as:

Division 1: The original Loomis FPD area

Division 2: The original South Placer FPD (Granite Bay) area

Today, South Placer FPD is governed by an independent seven-member Board of Directors and serves the communities of Granite Bay, Loomis, and the southern areas of Penryn and Newcastle. South Placer FPD covers approximately 55 square miles and serves a population nearing 42,000. It operates fire stations in Granite Bay and Loomis. South Placer FPD responds to over 3,500 service calls per year, including structure fires, brush fires, vehicle fires, traffic collisions, search and rescues, industrial accidents, hazardous materials incidents and emergency medical calls. In addition, South Placer FPD provides fire prevention, community education, emergency preparedness and other services relating to the protection of lives and property.

This proposed assessment district is intended to provide greater equity to the property owners' funding of South Placer FPD services, and, is inclusive of the parcels only within the South Placer FPD, Division 2 area. Division 2 is funded through a small portion of local property taxes, miscellaneous fees, and a static \$70 special tax that has remained unchanged since 1981. This tax does not include a cost-of-living index adjustment mechanism. The cost of providing fire protection and emergency response services continues to rise each year due to increasing emergency calls, enhanced firefighter training requirements, the growing wildfire risk to the community, and substantial increases in operational costs, including fuel, utilities, equipment, insurance, and personnel over the last 40 years.

Competitive wages in neighboring agencies have made it increasingly difficult for the Fire District to retain and attract firefighters, specifically paramedic firefighters.

The Fire District is not funded by the State or County and has never received any funding from the now-suspended Cal Fire Prevention Fee. In addition, the lack of a cost of living adjustment in the voter-approved Special Task has left the District unable to keep pace economically with the increased costs of operations, of which staffing and personnel costs are the primary expenditure

A new funding source will help address the wage disparity and, in turn, increase the retention of our locally trained firefighters. Adequate staffing also allows the Fire District to assemble the recommended number of personnel on the scene of an incident quicker, which is a factor for your Insurance Services Office (ISO) rating, affecting insurance rates. A negative change in ISO rating could result in higher costs with possibly lower coverage limits or the complete loss of homeowners insurance coverage

South Placer FPD seeks to maintain a high level of fire protection and emergency response service by maintaining appropriate staffing levels and providing improved apparatus replacement, maintenance of facilities, and increase in local firefighter wages.

This Engineer's Report supports a proposed new assessment to enhance existing funding sources, associated services and equipment, and fund these improved services and equipment. The proposed rates for this proposed assessment are shown in Table 1, below.

Table 1 – Proposed Assessment Rates

Property Type	Proposed Rate	SFE Factors	Unit
Single Family	\$ 214.16	1.0000	each
Multi-Family	\$ 125.82	0.5875	res unit
Commercial/Industrial	\$ 619.83	2.8943	acre
Office	\$ 434.79	2.0302	acre
Storage	\$ 1,281.47	5.9837	acre
Parking Lot	\$ 15.72	0.0734	each
Vacant	\$ 57.41	0.2681	each
Agriculture	\$ 8.47	0.0396	acre
Range Land & Open Space	\$ 0.17	0.0008	acre

The proposed assessment rates are used along with the relative fire hazard zone factor and the relative travel time factor to calculate the assessment for each parcel. These factors are explained in more detail in the Method of Apportionment section of this report.

This Engineer's Report (the "Report") was prepared to:

- Describe the fire suppression, safety and emergency response services and equipment that would be funded by the assessments (the "Services")
- Establish a budget for the Services that would be funded by the assessments in 2022-23
- Determine the special benefits received from the proposed Services by property within the South Placer Fire Protection District Assessment (the "Assessment District"), and
- Describe the method of apportionment to lots and parcels within the Assessment District.

This Report and the proposed assessments have been made in compliance with California Government Code Section 50078 et seq. (the "Code") and Article XIID of the California Constitution (the "Article").

The Assessment District is narrowly drawn to include only properties that directly receive the additional fire protection and prevention services provided by the assessment funds and are specially benefited from such Services. The Assessment Diagram included in this Report shows the boundaries of the Assessment District.

Legal Analysis of Proposition 218

The proposed assessment complies with Proposition 218, The Right to Vote on Taxes Act, which was approved by the voters of California on November 6, 1996, and is now Articles XIII C and XIII D of the California Constitution. Proposition 218 provides for benefit assessments to be levied to fund the cost of providing services, improvements, as well as maintenance and operation expenses of a public improvement that provide a special benefit to the assessed property.

Proposition 218 imposes a number of important requirements, including property-owner balloting, for the formation and continuation of assessments, and these requirements are satisfied by the process used to establish this assessment.

Silicon Valley Taxpayers Association, Inc. v Santa Clara County Open Space District (2008) 44 Cal.4th 431

On July 14, 2008, the California Supreme Court issued its ruling in *Silicon Valley Taxpayers Association, Inc. v. Santa Clara County Open Space District* ("Silicon Valley"). Several of the most important elements of the ruling are:

- Benefit assessments are for special, not general benefit
- The services and/or improvements funded by assessments must be clearly defined
- Special benefits are directly received by and provide a direct advantage to property in the Assessment District

Dahms v. Downtown Pomona Property (2009) 174 Cal.App.4th 708

On June 8, 2009, the Court of Appeal amended its original opinion upholding a benefit assessment for property in the downtown area of the City of Pomona. On July 22, 2009, the California Supreme Court granted review and transferred the case back to the Court of Appeal for reconsideration in light of the Supreme Court's discussion in the *Silicon Valley* case. In *Dahms*, the Appellate Court then upheld the assessment that was 100% special benefit (i.e. 0% general benefit) holding that the services and improvements funded by the assessments were directly provided to property in the assessment District. The Court also upheld discounts and exemptions from the assessment for certain properties.

Bonander v. Town of Tiburon (2009) 46 Cal.4th 646

On December 31, 2009, the Court of Appeal overturned a benefit assessment approved by property owners to pay for placing overhead utility lines underground in an area of the Town of Tiburon. The Court invalidated the assessments on the grounds that the assessments had been apportioned to assessed property based in part on relative costs within sub-areas of the assessment district, instead of each individual property's proportional special benefits.

Beutz v. County of Riverside (2010) 184 Cal.App.4th 1516

On May 26, 2010, the California Court of Appeal issued its decision in *Steven Beutz v. County of Riverside* ("Beutz"). This decision overturned an assessment for park maintenance in Wildomar, California, primarily because the general benefits associated with improvements and services were not explicitly calculated, quantified, and separated from the special benefits.

Golden Hill Neighborhood Association V. City of San Diego (2011)199 Cal.App.4th 416

On September 22, 2011, California Court of Appeal issued its decision in *Golden Hill Neighborhood Association v. City of San Diego*. This decision overturned an assessment for street and landscaping maintenance in the Greater Golden Hill neighborhood of San Diego, California. The court described two primary reasons for its decision. First, as in *Beutz*, the court found the general benefits associated with services were not explicitly calculated, quantified and separated from the special benefits. Second, the court found that the City had failed to document the basis for the assessment on city-owned parcels.

Concerned Citizens for Responsible Government v. West Point Fire Protection District (2011)149 Cal. Rptr. 3d 640

On November 28, 2012, the California Supreme Court dismissed as moot petitioners' appeal in the case of *Concerned Citizens for Responsible Government v. West Point Fire Protection District*. The Supreme Court had granted review of the Court of Appeal's decision in this case early in July 2012 after several local government organizations petitioned the Court to have the Court of Appeal's decision de-published because of its apparent conflicts with the California Constitution and potentially overly broad impact on other assessments. The Supreme Court's grant of review caused the Court of Appeal decision to be de-published. The Supreme Court eventually dismissed the appeal as moot.

For fire agencies, the most concerning aspect of the decision from the Court of Appeal was its statement that fire services (as opposed to improvements) may be in whole or in part a general benefit, and therefore unsuitable for funding with an assessment. Fortunately, the Court of Appeal's decision remains unpublished, and cannot be cited as binding precedent.

Compliance with Current Law

This Engineer's Report is consistent with the requirements of Article XIIC and XIID of the California Constitution and with the *Silicon Valley* decision because the Services to be funded are clearly defined; the Services are available to and will be directly provided to all benefited property in the Assessment District; the Services provide a direct advantage to property in the Assessment District that would not be received in the absence of the assessment; and the Services are benefits that are over and above general benefits conferred on real property located in South Placer FPD or to the public at large by other public entities that make up the membership of South Placer FPD.

This Report is consistent with *Dahms* because, similar to the *Downtown Pomona* assessment validated in *Dahms*, the Services will be directly provided to property in the Assessment District. More specifically, as discussed hereafter, the Services afford benefits specifically unique and supplied only to property owners within the District, with a corresponding effect that is not shared by other parcels outside of the District or real property in general, including the public at large. While *Dahms* could be used as the basis for a finding of 0% general benefits, this Engineer's Report establishes a more generous separation and quantification of general benefits.

This Report is also consistent with *Bonander* because the Assessment has been apportioned based on the proportional special benefit to each property. Furthermore, the Assessment is consistent with *Beutz* and *Golden Hill* because the general benefits have been explicitly calculated, quantified, and excluded from the Assessment.

Assessment Process

Following submittal of this Report to South Placer FPD for preliminary approval, the South Placer FPD Board of Directors (the “Board”) may, by Resolution, call for an assessment ballot proceeding and public hearing on the proposed establishment of a Fire Protection and Emergency Response Services Assessment.

If the Board approves such a Resolution, a Notice of Assessment and Assessment Ballot will be mailed to each property owner within the proposed Assessment District boundaries who will be subject to the proposed assessment. The Notice will include a description of the Services to be funded by the proposed assessment, the total amount of the proposed assessment and the amount chargeable to the owner’s parcel, the reasons for the proposed assessment and the basis upon which it was calculated, and an explanation of the process for submitting a ballot. Each Notice will also include a postage prepaid return envelope and a ballot on which the property owner may mark his or her approval or disapproval of the proposed assessment as well as affix his or her signature.

After the ballots are mailed to property owners in the Assessment District, a minimum 45-day time period must be provided for the return of the assessment ballots. Following this balloting time period, a public hearing must be held for the purpose of allowing public testimony regarding the proposed assessments. Ballots will be received if previously mailed and received by the public agency before the public hearing, or if physically submitted at the public hearing. At the public hearing, the public will have the opportunity to speak on the issue. The public hearing is currently scheduled to open on June 8, 2022. After receiving ballots and public comment, the public hearing will be closed. The Board will then recess in order that the ballots can be tabulated.

If it is determined that the assessment ballots submitted in opposition to the proposed assessment do not exceed the assessment ballots submitted in favor of the assessment (weighted by the proportional financial obligation of the property for which ballots are submitted), the Board may approve the imposition of assessment for fiscal year 2022-23 and each fiscal year thereafter. If the assessment is confirmed and approved, the Board will order the levy of the assessment to be submitted to the Placer County Auditor/Controller for inclusion on the property tax roll for Fiscal Year 2022-23. The levy and collection of the assessment would continue year-to-year until terminated by the Board.

The assessment granted by the ballot proceeding would be for a maximum assessment rate of \$214.16 per single family home, increased each subsequent year by the consumer price index not to exceed 3% per year.

In each subsequent year for which the assessment will be continued, an updated proposed budget, assessment rate and an updated assessment roll listing all parcels and their proposed assessment for the upcoming fiscal year shall be prepared and considered by the Board of Directors. At this meeting, the Board will also call for the publication in a local newspaper a legal notice of the intent to continue the assessment for the next fiscal year and set the date for the noticed public hearing. At the annual public hearing, members of the public can provide input to the Board prior to the Board's decision on continuing the services and assessment for the next fiscal year.

If the assessment is so confirmed and approved, the levies would be submitted to the Placer County Auditor/Controller for inclusion on the property tax roll for Fiscal Year 2022-23.

Description of Services

South Placer FPD provides a range of fire suppression and protection, prevention, and other fire and emergency-related services to properties within its boundaries.

This proposed benefit assessment would provide funding for four major areas of service improvements within Division 2 for its' fire suppression and protection operations (with the majority of the proposed assessment revenue being dedicated to firefighter retention.)

- Increased Firefighter Staffing and Training
- Improved Maintenance and Replacement of Apparatus and Equipment
- Improved Maintenance and Capital Repairs of Fire Stations
- Other Services and Supplies

The South Placer FPD fire stations included within the Division 2 area are:

Station 15: 4650 East Roseville Parkway, Granite Bay, CA 95746

Station 15 is located in the Treelake Subdivision close to Granite Bay High School. Their first in area includes the Treelake community and the Woodbridge Ranch Subdivision off Sierra College and Old Auburn. Station 15 is the closest Placer County fire agency station to Sacramento County off Sierra College Blvd and borders the City of Roseville.

Station 17: 6900 Eureka Rd, Granite Bay, CA 95746

Station 17 is the Headquarters Station of the District, also known as the "Big House." This station campus has facilities for training including a training/meeting room, training tower, training ground with multiple forcible entry, ventilation, and pumping props. The administration is also co-located on the site split between the office area inside Station 17 and a modular office building located across the entrance driveway. The vehicle maintenance facility is also located on the campus as well as the Districts store rooms for fire and EMS equipment.

Station 19: 7070 Auburn Folsom Road, Granite Bay, CA 95746

Station 19 is located on the Auburn-Folsom Road corridor with quick access to all areas of the District. The station is staffed with ALS capabilities and houses the District's OES Engine. The Battalion Chief is located at this station having a separate office and sleeping area. The station can also serve as an Emergency Command Center with Dispatch Capabilities and backup generator power. The District's Intern Firefighter program is also coordinated from this station allowing for an Intern Firefighter to gain experience as a Firefighter.

Station 20: 3505 Auburn Folsom Road, Loomis CA 95650 - (50% of use in Division 2)

Station 20 is the furthest Station to the north of our District otherwise known as the "Ridgerunners". The station is located in the area of the District with the greatest threat for a major wildland fire. Station personnel cross-staff three apparatus assigned to the Station and cover an area of AMR's ambulance service area under an automatic aid agreement.

The formula below describes the relationship between the final level of services, the baseline level of service based on existing funding, and the enhanced level of services funded by the assessment if it is approved. It should be noted, due to the fact that current operating costs are increasing at a faster rate than current funding sources, the baseline level of services is diminishing over time.

<i>Final Level of Service</i>	=	<i>Current Baseline Level of Service</i>	+	<i>Proposed Enhanced Level of Service</i>
-------------------------------	---	--	---	---

Below is a more detailed description of these improvements that are provided for the special benefit of property in the Assessment District.

Increased Firefighting Staffing and Training

Firefighting emergency response staffing levels are described colloquially in terms of "speed and weight," with speed describing the response time and weight describing the number and types of personnel. Also, staffing levels are also commonly described in terms of the number of firefighting staff per fire truck and/or apparatus, such as "4 on an initial response" or "3 on an initial response." South Placer Fire is satisfied with its response time ("speed") but has determined that its staffing levels ("weight") at "3 on an initial response" could be improved.

Although there are many approaches to deploying firefighting staff, OSHA guidelines place strict requirements on operations, particularly when firefighters are required to enter potentially Immediately Dangerous to Life and Health (IDLH) environments such as structure fires. In these atmospheres, OSHA requires that personnel use self-contained breathing apparatus (SCBA), that a minimum of two firefighters work as a team inside the structure, and that a minimum of two firefighters be on standby outside the structure to provide assistance or perform rescue.

To meet the “2 in, 2 out” standard, the National Fire Protection Agency (NFPA) recommendation is four (4) personnel per apparatus in a community of this size and risk. The District cannot meet the NFPA recommendation due to budget constraints. The next best option to align with industry standards and respond adequately to the increasing call volume is to staff all apparatus with three (3) personnel.

Essentially the “2 in, 2 out” rule severely limits South Placer FPD’s ability to respond effectively to many types of emergencies. The challenge is compounded in the case of multiple calls. South Placer FPD has determined that an increase in staffing would significantly increase its effectiveness, as well as compliance with OSHA requirements, and would benefit the property owners with heightened levels of property and human life protection.

Improved and increased firefighting staffing levels will significantly contribute to improved safety and protection of real property within the proposed Assessment District.

The proposed assessment is intended to provide funding for additional full-time-staffing, and some additional training. Lacking a change in funding, at the end of the current fiscal year (2021-22), at minimum, staffing on half of the apparatus in the District (Stations 19 and 20) will likely be reduced to two personnel, resulting in delayed response and inadequate resources to mitigate incidents quickly. The costs for the proposed staffing increases to support the implementation of “3 on an initial response” staffing are included in the Table 3 Budget.

Improved Maintenance and Replacement of Apparatus and Equipment

South Placer FPD desires to ensure maintenance and replacement of apparatus in order to maximize safety and effectiveness for fire suppression. Improved maintenance and replacement will significantly contribute to improved safety and protection of real property. It should be noted that the need for equipment replacement will be ongoing beyond the 10 years. Table 2 below lists all the current apparatus in operation in the District.

Table 2 – Current Apparatus in Operation

Station	Apparatus
15	Engine 15 and Grass 15
17	Truck 17, Medic 17, Rescue 17, Brush 17, RT-14, RAT 1
19	Engine 19, Brush 19, Bat 19, Reserve Duty Officer Rig, OES 380
20	Engine 20, Medic 20, and Grass 20

Capital Repairs

South Placer FPD, Division 2, operates out of four primary facilities. Some of the funds from this assessment would allow for critical repairs to be completed across Stations 15, 17, 19, and 20 such as new flooring, domestic plumbing, septic system updating, repairs to concrete/asphalt for parking, driveways, etc.

Other Services and Supplies

The budget shown in Table 3 includes and summarizes budget allocations for miscellaneous other services and supplies, including capital repairs, equipment operation and maintenance, facilities maintenance and operation, professional services, supplies and materials, utilities and administration in support of South Placer FPD's operations.

Cost and Budget

The following budget lists the proposed expenditures funded by the Assessment District in Fiscal Year 2022-23.

Table 3 – Cost and Budget

South Placer Fire Protection District Fire Protection and Emergency Response Assessment Estimate of Costs Fiscal Year 2022-23		Total Budget
Service Needs		
Personnel Salaries/Benefits		\$13,246,185
Service and Operations		\$1,198,000
Fixed Assets		\$70,000
Capital Expenditures		\$1,198,000
Mitigation Expenditures		\$360,000
Other Expenditures Combined		\$3,200,190
Total Service Needs (a)		\$19,272,375
Less: Contribution from Existing Revenue Sources –(Offsets General Benefits) (b)		(\$16,869,107)
Net Cost of Servicing to Assessment District (a-b)		\$2,403,268
Allowance for implementation of assessment and county collection (c)		\$78,250
Allowance for uncollectable assessments		\$18,000
Total Fire Suppression and Protection Services Budget (a-b+c) (Net Amount to be Assessed)		\$2,499,518
Assessment District Budget Allocation to Parcels		
Total Assessment Budget		\$2,499,518
Effective Single Family Equivalent Benefit Units in Assessment District		11,671
Assessment per Effective Single Family Equivalent Unit (SFE)		\$214.16

The “Service Needs” cost estimates are presented in the budget table above for the 2022-23 fiscal year only, but are based upon financial forecasting over a 10-year cycle and beyond. This forecasting concludes that these costs will likely persist consistently into the future. Consistent with the General Benefit requirement described later in this Report, at least 38% of the total cost of the South Placer FPD Fire Services must be funded from sources other than this proposed assessment to cover any general benefits from the Services. Therefore, the cost of services of \$2,499,518 funded by the proposed assessment can be funded exclusively through the assessment levy as a special benefit since the current County contributions from its dedicated ad valorem property taxes, remaining fund balance and the existing benefit assessment revenue exceed approximately 87.53%. (\$16,869,107/\$19,272,375) of the total cost of South Placer FPD

Fire Services, far in excess of the above required 38% non-assessment general benefit funding requirements. The 87.53% funding is from property taxes and other sources. The Total SFEs are the sum of the assigned Single Family Equivalent units for each affected parcel based upon a parcel-by-parcel analysis of the service area consistent with the Method of Apportionment described later in the Report.

Method of Apportionment

This section includes an explanation of the special benefits to be derived from the Services, the criteria for the expenditure of assessment funds, and the methodology used to apportion the total assessment to properties within the Assessment District.

The Assessment District area consists of all Assessor Parcels within South Placer FPD, Division 2 boundaries. The method used for apportioning the assessment is based upon the proportional special benefits from the Services to be provided to the properties in the assessment area over and above general benefits conferred on real property or to the public at large. Special benefit is calculated for each parcel in the Assessment District using the following process:

1. Identification of all benefit factors derived from the improved services
2. Calculation of the proportion of these benefits that are general
3. Determination of the relative special benefit within different areas within the Assessment District
4. Determination of the relative special benefit per property type
5. Calculation of the specific assessment for each individual parcel based upon special vs. general benefit; location, property type, property characteristics, improvements on property and other supporting attributes

Implementation of an Assessment for Fire Protection Services

California Government Code Section 50078 et. seq. allows agencies which provide fire suppression services, such as South Placer FPD, to levy assessments for fire suppression services. Section 50078 states the following:

“Any local agency which provides fire suppression services directly or by contract with the state or a local agency may, by ordinance or by resolution adopted after notice and hearing, determine and levy an assessment for fire suppression services pursuant to this article.”

In addition, California Government Code Section 50078.1 defines the term “fire suppression” as follows:

“(c) “Fire suppression” includes firefighting and fire prevention, including, but not limited to, vegetation removal or management undertaken, in whole or in part, for the reduction of a fire hazard.”

Therefore, the Services to be provided by the Assessment District fall within the scope of services that may be funded by assessments under the Code.

The assessment must be levied based on the special benefit to property. Special benefit means a particular and distinct benefit received by property over and above any general benefits conferred on real property located in the Assessment District or the public at large. With reference to the requirements for assessment, Section 50078.5 of the California Government Code states:

"(b) The benefit assessment shall be levied on a parcel, class of improvement to property, or use of property basis, or a combination thereof, within the boundaries of the local agency, zone, or area of benefit."

"The assessment may be levied against any parcel, improvement, or use of property to which such services may be made available whether or not the service is actually used."

Proposition 218, as codified in Article XIID of the California Constitution, has confirmed that assessments must be based on the special benefit to property:

"No assessment shall be imposed on any parcel which exceeds the reasonable cost of the proportional special benefit conferred on that parcel."

Since assessments are levied on the basis of special benefit, they are not a tax and are not governed by Article XIII A of the California Constitution.

The following two sections describe how and why the Fire Protection Services specially benefit properties. This special benefit is particular and distinct from its effect on other property, and that other real property and the public at large do not share the special benefit.

Overview of Special Benefits from Fire Protection Services

Special Benefit is defined in Article XIID of the California Constitution as a "particular and distinct benefit over and above general benefits." The proposed services and improvements provide "particular and distinct" benefit because they are distinctly defined and described, and are provided directly to the parcels within the Assessment District boundaries. The proposed services and improvements are "over and above general benefits" currently supplied by the South Placer FPD and other agencies.

Moreover, this assessment for fire protection services can be clearly contrasted with assessments for parks and recreation, or even open space, as addressed in *Silicon Valley*, because fire services are provided directly to individual parcels in the form of fire prevention and suppression; by contrast, property owners must travel from their properties to dispersed locations to fully enjoy the benefits of parks and open space.

In summary, real property located within the boundaries of the proposed Assessment District distinctly and directly benefits from increased safety and protection of real property and human life in the Assessment District.

Description of Special Benefit From Fire Protection Services

In order to allocate the assessments, the special benefit arising from the Services that will be provided to property in the Assessment District has been identified and described below. This special benefit must confer a direct advantage to the assessed properties; otherwise it would be general benefit, as described further in this report.

The following special benefit confers to residential, commercial, industrial, institutional, and other lots and parcels resulting from the improved fire protection and emergency response services that will be provided in the Assessment District. This special benefit is summarized as follows:

Increased safety and protection of real property assets for all property owners within the Assessment District.

The proposed Assessments will fund improved fire suppression, prevention, protection and emergency response services, and thereby can significantly reduce the risk of property damage, human injury, or death associated with fires within the assessment District. Clearly, fire mitigation helps to protect and specifically benefits both improved properties and vacant properties in the Assessment District.

*"Fire is the largest single cause of property loss in the United States. In the last decade, fires have caused direct losses of more than \$120 billion and countless billions more in related cost."*¹

*"Over 140,000 wildfires occurred on average each year, burning a total of almost 14.5 million acres. And since 1990, over 900 homes have been destroyed each year by wildfires."*²

*"The strategies and techniques to address fire risks in structures are known. When implemented, these means have proven effective in the reduction of losses."*³

The proposed improved fire suppression, prevention, protection, and emergency response services support this special benefit by providing South Placer FPD with the needed resources to protect real property from uncontrolled fires.

The proposed increased firefighting staffing supports this special benefit by providing needed personnel resources. For instance, current OSHA regulations require that two firefighters remain outside a structure during an emergency response to a structure fire,

while two firefighters may enter. *(This OSHA Policy is documented as United States Department of Labor - Occupational Safety and Health Administration — OSHA Regulation “2 in 2 out”— The “2In/2 Out” policy is part of paragraph (g)(4) of OSHA’s revised respiratory protection standard, 29 CFR 1910.134.)*

This “2 in, 2 out” requirement places significant limitations on South Placer FPD’s ability to respond to structure fires, particularly when second and third calls are made. The proposed assessment would allow South Placer FPD to optimize staffing levels and satisfy the “2 in, 2 out” requirement on significantly more emergency calls. Properties receive direct special benefit from the increased staffing because the increase in staffing in turn increases the likelihood that property and life will be protected. For example, if only two firefighters are available to respond to a structure fire, no firefighter would be allowed to enter the structure –significantly delaying critical fire suppression activity.

The increased firefighting staffing specifically satisfies the strict legal requirements of the *Silicon Valley* decision in that these Services are clearly defined, are available to and will be directly provided to all benefited property, and will provide a direct advantage that would not be received in the absence of the assessment.

General Versus Special Benefit

Article XIII D of the California Constitution requires any local agency proposing to increase or impose a benefit assessment to “separate the general benefits from the special benefits conferred on a parcel.”

In other words:

<i>Total Benefit</i>	=	<i>General Benefit</i>	+	<i>Special Benefit</i>
----------------------	---	------------------------	---	------------------------

The rationale for separating special and general benefits is to ensure that property owners subject to the benefit assessment are not paying for general benefits. The assessment, therefore, can fund special benefits but cannot fund general benefits.

Please note that the property owners of the parcels subject to the assessment *should not* and *cannot* be required to pay for the general benefits arising from the proposed service and equipment improvements – this is an essential assessment-payer-protection requirement of all Proposition 218–compliant assessments. In order to clearly and overwhelmingly satisfy this important requirement, the general benefit has been calculated in each step favoring its reasonable maximum to totally avoid any possibility that the total general benefit to be funded from other sources is under-calculated.

There is no statutory formula to calculate, quantify and separate general benefit in support of benefit assessment analysis. General benefits are benefits from improvements or services that are not special in nature, are not “particular and distinct,” and are not “over and above” benefits received by other properties, or the public at large. *Silicon Valley* provides some clarification by indicating that general benefits provide “an indirect, derivative advantage” and are not necessarily proximate to the improvements. Again, in this Report, the general benefit is generously estimated and described, and then budgeted so that it is funded by sources other than the assessment. Although there is not an industry standard for this general benefit calculation, the three-component (plus an adjustment for emergency medical) approach shown in the formula below has been the most-widely used.

1.) <i>Benefit to Real Property Outside the Assessment District</i>	
+	2.) <i>Benefit to Real Property Inside the Assessment District that is Indirect and Derivative</i>
+	3.) <i>Benefit to the Public at Large</i>
+	<i>(Adjustment for Emergency Medical Services)</i>
= <i>General Benefit</i>	

Special benefit, on the other hand, is defined in the California Constitution as “a particular and distinct benefit over and above general benefits conferred on real property located in the district or to the public at large.” The *Silicon Valley* decision indicates that a special benefit is conferred to a property if the property “receives a direct advantage from the improvement (e.g., proximity to a park).” In this assessment, as noted previously, the improved Services are available when needed to all properties in the Assessment District, so the overwhelming proportion of the benefits conferred to property is special, and the benefits are only minimally received by property outside the Assessment District or the public at large.

Calculating General Benefit

This section provides a measure of the general benefits from the assessments.

1.) Benefit to Property Outside the Assessment District

Properties within the Assessment District receive almost all of the special benefits from the Services because the Services will be provided solely in the Assessment District boundaries. (It should be noted that the Services may, at times, be used outside the South Placer FPD boundaries. However, this use is part of a mutual aid agreement and is offset, at least in part, by the provision of Services by other outside agencies within the Assessment District boundaries.)

Properties proximate to, but outside of, the boundaries of the Assessment District receive some benefit from the proposed Services due to some degree of indirectly reduced fire risk to their property. Specifically, the parcels immediately contiguous to South Placer FPD's boundaries enjoy a reduction to the possibility of a fire "jumping" from an adjacent structure (within the South Placer FPD boundaries) because South Placer FPD controls structure fires within its boundaries. Because South Placer FPD's primary role is directed towards structure fires, as opposed to wildland fires, and structure fires generally "jump" more slowly, it is reasonable to only consider the directly adjacent, but outside, parcels. These are estimated to receive some benefit relative to parcels within the Assessment District, but they do not directly receive the improved fire protection resulting from the Services funded by the Assessments.

At the time the Assessment was proposed, the Engineer of Work, using the Geographic Information Systems, quantified the number of parcels proximate to the Assessment District boundary but outside the Assessment District, and thereby determined that there were approximately 897 directly adjacent properties. Further consideration of the types, use, location and other attributes of the outside but proximate parcels is not warranted due to numeric insignificance, and would not materially increase the accuracy of this analysis:

897 parcels outside South Placer FPD but proximate to the District Boundaries

9,941 parcels in the Assessment District.

Calculation:

General Benefit to Property Outside the Assessment District =

*$897 / (9,941 + 897) = 8.28\%$: ~ rounded to **10.0%***

It can reasonably be argued that properties protected inside, but near the Assessment District boundaries, are offset by similar fire protection provided outside, but near, the Assessment District's boundaries, through mutual aid agreements. However, this analysis uses the more generous approach of finding that 10.0% of the Services may be of general benefit to property outside the Assessment District, and cannot be funded by this assessment.

Note: Special Consideration for Division 1 Parcels

The calculation of the *"Benefit to Real Property Outside the Assessment District"* as described above in this section is based upon a standard-of-the-industry approach that is well-vetted and has been used routinely to calculate the general benefits on many benefit assessments over the last 15 years. It relies upon the fact that most fire service providers are directly adjacent to other fire service providers and have mutual aid agreements – in other words, the benefit conferred to nearby parcels (except for the accounting of the 897 directly adjacent parcels) is essentially perfectly offset by the benefit received from other fire service providers. However, since the proposed Assessment District is adjacent to the parcels also served by South Placer FPD (i.e. Division 1), additional analysis is required.

Since the Division 1 parcels are also served by South Placer FPD, they may more efficiently receive "spill-over" general benefit from the improved services provided by this proposed assessment to the Division 2 parcels. For example, well-staffed fire stations in Division 2 may more rapidly be able to provide additional firefighters to a significant Division 1 emergency call since they are managed by the same Fire District bureaucracy. In order to liberally account for this potential type of general benefit to the Division 1 parcels, this component of general benefit will be increased by 100% for total of 20%.

2.) Benefit to Property Inside the District that is *Indirect and Derivative*

In determining the proposed Assessment District area, South Placer FPD has been careful to only include parcels that will directly receive the benefit of the improved Services. All parcels will directly benefit from the use of the improved Services throughout the Assessment District in order to maintain the same improved level of fire suppression and protection throughout the area. Fire protection and suppression will be provided as needed throughout the area. The shared special benefit - reduced severity and number of fires - would be received on an equivalent basis by all parcels in the Assessment District due to the proposed increased funding. Furthermore, all parcels in the Assessment District would directly benefit from the ability to request or receive service from South Placer FPD and to have a South Placer FPD resource promptly respond directly to the parcel and address the owner's or resident's service need.

The *Silicon Valley* decision indicates that the fact that a benefit is conferred throughout the Assessment District area does not make the benefit general rather than special, so long as the Assessment District is narrowly drawn and limited to the parcels directly receiving shared special benefits from the service. This concept is particularly applicable in situations involving a landowner-approved assessment-funded extension or improvement of a local government service to benefit lands. This Report therefore concludes that, other than the general benefit to properties outside the Assessment District (discussed above) and to the public at large (discussed below), the general benefit from the fire protection services that is "indirect and derivative" is negligible.

3.) Benefit To The Public At Large

Because the Services directly serve and benefit all of the property in the Assessment District, any general benefit conferred on the public at large would be small.

The public at large uses the public highways, and when traveling in and through the Assessment District the public may benefit from the services without contributing to the assessment. Although the protection of this critical infrastructure is certainly a benefit to all the property within South Placer FPD, this protection is arguably "indirect and derivative" and possibly benefits people rather than property. A fair and appropriate measure of the general benefit to the public at large therefore is the amount of highway and throughway street area within the Assessment District relative to the overall land area. An analysis of maps of the Assessment District shows that approximately 5.70% of the land area in the Assessment District is covered by highways and throughway streets.

A 6.0% contribution therefore is a generous, fair and appropriate measure of the general benefit to the public at large within the Assessment District and cannot be funded by this assessment.

Adjustment to Account for Emergency Medical Services as General Benefit

For the purposes of this Report, an additional adjustment has been made to the general benefits calculation to account for general benefits that may result from the District's rescue and emergency medical services ("EMS") associated with the proposed Services. *(Limitations on the appropriateness of Proposition 218-compliant assessments to fund EMS is still debated - in any case, this assessment does not include funding for EMS).* This assessment is designed to provide funding for fire protection and emergency response services, including fire-related and non-fire-related rescue and associated medical services. However, it is not designed to fund typical, non-fire/non-rescue medical calls (e.g., a cardiac arrest medical call).

South Placer FPD is authorized to provide EMS in addition to its primary responsibility of fire prevention and suppression. In fact, a significant portion of South Placer FPD's emergency service calls are associated with providing EMS. Nonetheless, the largest portion by far of the costs associated with operating South Placer FPD is support for fire suppression services as illustrated in Table 4, below.

Incremental costs associated with non-fire/non-rescue emergency medical service include almost exclusively the operating costs associated with transportation to such calls such as fuel, maintenance and depreciation. For further clarification, these are costs that are only incurred because of EMS, and do not include fixed costs such as personnel who would be on active duty in any case as well (as the associated training), and would therefore be incurred in any event in satisfying South Placer FPD's primary responsibility of fire protection and suppression.

Evaluation of the transportation associated with non-fire/non-rescue emergency medical calls for several similar fire districts in California indicates that typically around 5-10% of overall operating costs are for such calls. An analysis of South Placer FPD's actual additional costs for non-fire/non-rescue emergency medical calls is shown in Table 4, below, and supports an adjustment of 11.08%. This adjustment has generously been rounded up to 12%.

Table 4 – Emergency Medical Expenses Versus Overall Budget

EMS Expense	Cost
EMS Fuel Cost	\$9,520.00
EMS Apparatus Operations and Maintenance Cost	\$7,800.00
EMS Supplies and Equipment	\$251,588.00
Annual EMS Training and Certification Costs	\$7,950.00
Total EMS Cost (a)	\$276,858.00
Total Budget from Table 3 EMS Cost (b)	\$2,499,461
Percentage of Total Budget on Emergency Medical (a/b)	11.08%

The proposed assessment, as indicated through this Report, will exclusively fund special benefits conferred upon the properties within South Placer FPD Division 2 boundaries, while EMS is directly funded from South Placer FPD through non-assessment sources including property taxes. For purposes of this Report, EMS costs over and above those necessary for fire suppression have been treated as general benefits, and it is conceded that these general benefits may exist at the same percentage for the proposed Services as with the existing baseline services. Therefore, it can be concluded that South Placer FPD's services are 11.08% general as a result of providing EMS services; The engineer is requiring a 12% adjustment for this component.

Summary of General Benefits

Using a sum of the measures of general benefit for the public at large and land outside the Assessment Area, we find that approximately 38% of the benefits conferred by the proposed Fire Protection and Emergency Response Assessment may be general in nature and must therefore be funded by sources other than the assessment.

General Benefit Calculation

10.0% (1. Outside the Assessment District - Adjacent parcels)
 10.0% (1. Outside the Assessment District – Division 1 parcels)
 + 0.0% (2. "Indirect and Derivative" Property within the Assessment District)
 + 6.0% (3. Public at Large)
 = 26.0% (Subtotal of General Benefit)

 + 12.0% (Emergency Medical Adjustment)

 = **38.0%** (Total of General Benefits)

The Assessment District's total budget for 2022-23 is \$19,272,375. Of this total assessment budget amount, the County will contribute at least \$16,861,107 which is more than 80% of the total budget from sources other than this proposed assessment including dedicated property taxes and the existing benefit assessment. This contribution constitutes significantly more than the 38% general benefits estimated by the Assessment Engineer, which must be paid for by non-assessment sources.

Zones of Benefit

The Assessment District has been narrowly drawn. The assessments will fund improved fire protection services relatively uniformly throughout the Assessment District. Properties of similar type will receive essentially equivalent types of special benefit with reasonable, parcel-by-parcel adjustments for fire hazard zone and proximity to fire stations (as explained later in the Method of Assessment section), and no broad, widespread Zones of Benefit are needed. Instead, each parcel is subject to geographic factors, acting as effective individual mini-zones.

The Assessment Area is extremely rural, and includes a patchwork of areas of high and very high fire risk. Further, travel by roadway throughout the Assessment Area is very limited, and travel times from stations to specific parcels vary greatly. Accordingly, in lieu of traditional Zones of Benefits, the specific benefit of each parcel is individually calculated and adjusted for both fire risk zone and response travel time.

Assessment Apportionment

The Assessment Engineer determined that the appropriate method of assessment should be based on the type of property, the relative risk of fire by type of property, the relative fire hazard zone factor, the relative travel time factor, the relative size of the property, and the relative damage value (replacement cost) of fires by property type. This method is further described below.

Method of Assessment

The next step in apportioning assessments is to determine the relative special benefit for each property. This process involves determining the relative benefit received by each property in relation to a "benchmark" property, a single family detached dwelling on one parcel (one "Single Family Equivalent Benefit Unit" or "SFE").

This SFE methodology is commonly used to distribute assessments in proportion to estimated special benefits and is generally recognized as providing the basis for a fair and appropriate distribution of assessments. In this Report, all properties are assigned an SFE value, which is each property's relative benefit in relation to the benefit received by a single family home on one parcel.

The relative benefit to properties from fire related services is:

Equation 1 – Relative Special Benefit to Properties

Special Benefit =

$$\Sigma(\text{Fire Risk Factors}) * \Sigma(\text{Structure Replacement Factors}) * \Sigma(\text{Location/Topography Factors})$$

Simply put, the special benefit conferred to property is the product of the fire risk, the structure replacement costs and the location and topographic factors.

Typically, the development of the rate methodology for fire assessments is based upon fire risk and structure value. However, in this case, due to the particular nature of SPFPD fire hazards and terrain, two additional factors (Fire Hazard Zone and Proximity (Travel Time) were added in support of a uniquely rigorous and detailed, parcel-by-parcel development of rate and assessment.

For example, by this formula, a hypothetical parcel used for a high fire risk operation (i.e., a fireworks factory), with high value structures, in a high fire hazard zone and very close to a fire station, receives a high amount of special benefit. Conversely, a vacant lot not in a high fire hazard area and a long way from a fire station would receive far less special benefit. It follows that the special benefit, and accordingly, the assessment amount, should be calculated and assigned consistent with this logic.

Overview of Approach

Each parcel is evaluated and the special benefit is calculated using 4 attribute criteria:

Risk and Replacement Factors:

1.) Fire Risk (see Table 5)

2.) Structure Replacement Value (see Table 6)

These factors are summarized in Table 7

Location and Topography Adjustments:

3.) Location and Topography - Hazard Zone (see Table 8)

4.) Location and Topography - Proximity (Travel Time) (see Table 9)

Overview of Normalization in Adjustments in Multi-Attribute Analysis

One of the greatest engineering challenges in modeling and calculating special benefit on a specific parcel is the need to balance the effect of various attributes in a multi-attribute analysis. In this case, the special benefit method of apportionment is based upon four different attributes and each must be “weighted” to affect the overall special benefit calculation in a reasonable way, commensurate with their effect on the overall special benefit. The general approach taken is to adjust each attribute value towards a reasonable proportion of 1, such that it is consistent with the base unit of 1 Single Family Equivalent. See the “Area Adjustment Factor” used in Table 6 and the Impact Factor used in Tables 8 and 9.

1.) Fire Risk Factors

This fire risk is based upon the specific parcel type and use, including use of structure (e.g., used for cooking), type of structure (centralized heating), etc.

In 2018, the National Fire Protection Association (“NFPA”), one of the preeminent authorities on fire protection in the United States, published the Structure Fires by Occupancy 2012-2016 Annual Averages Report. This report comprehensively tabulates the number of fires for each classification of property type within the United States from 2012-2016, and serves as a reasonable and rational basis to determine fire risk.

The percent of fires for each property is then divided by the total number of that property type to determine un-normalized fire risk factors. Finally, the risk factors are normalized based upon a factor of 1.00 for a single family property. Table 5 below tabulates the Fire Risk Factors for each property type.

Table 5 – Normalized Fire Risk Factors

Property Type	Percentage of Study Units(a)	Percentage of Fires(b)	Risk Factor(b/a)	Normalized Risk Factor
Single Family	68.4%	52.9%	0.7742	1.0000
Multi-Family	13.1%	23.5%	1.7977	2.3220
Commercial/Industrial	3.4%	13.7%	4.0375	5.2150
Office	0.6%	0.7%	1.2019	1.5524
Storage	0.5%	4.7%	10.0987	13.0438
Parking Lot(1)	NA	NA	0.0000	0.3179
Vacant	11.7%	2.9%	0.2461	0.3179
Agriculture	1.7%	1.6%	0.0000	1.2310
Range Land & Open Space	0.8%	0.1%	0.0724	0.0935

Structure Fires by Occupancy 2012-2016 Annual Averages, NFPA, and an analysis of the percentage of properties by property type in the State of California by SCI

(1) This study did not provide sufficient analysis to develop risk factors for parking lots, so the vacant property type is used as a proxy.

The effect of installed fire sprinklers on the special benefit received from the proposed services must be tempered by the fact that many factors including fire type, weather, roofing material, building materials response time, defensible space, use of working smoke detectors, type of windows, maintenance of sprinkler system, etc. likely more significantly affect fire protection. These factors are incorporated into our analysis. Sprinklers have been required for commercial parcels for many years, so that element is already incorporated into our risk analysis. However, more recently, sprinklers for new and renovated residential structures have become required. Special cases will be considered as part of the standard appeals process described later in this Report.

2.) Structure Replacement Value Factors

The relative value of different property types was evaluated within the District to determine the Structure Replacement Value Factor according to the following formula:

Equation 2 – Structure Replacement Value Factors

Structure Replacement Value =

Normalized: [((Structure Weighting Factor * (Average Improved Value)) +

((Land Weighting Factor * (Average Land Value))] * Area Adjustment Factor

Where:

- “Structure Weighting Factor” = 10 to “weight” relative importance of structure over land.
- “Average Improved Value” is average of value of all structures and improvements.
- “Normalized:[]” process is required to adjust the Structure Replacement Value factor as compared to a Single Family property type. The calculated structure replacement value for a specific property type is divided by the structure replacement value for a single family property type – and then it is multiplied by the area adjustment factor.
- Area Adjustment Factor adjusts for various average parcel size as compared to an average single family residence and only affects multi-family parcels for the service area. Hence, the adjustment factor is 0.644 for multi-family parcels and 1.0 (e.g. no effect) for all other property use types.
- “Land Weighting Factor” = 1
- “Average Land Value” is average of value of all land per property type

Table 6 on the next page is a tabulation of the structure replacement values for each property type as defined by Equation 2, on the previous page.

Table 6 – Structure Replacement Factors

Property Type	Average Improved Values (a)	Average Land Values (b)	Normalized Replacement Cost Factor	Unit
Single Family	\$237,094	\$164,122	1.0000	each
Multi-Family	\$119,616	\$75,217	0.2530	res unit
Commercial/Industrial	\$658,259	\$452,057	0.5550	acre
Office	\$1,588,841	\$688,198	1.3078	acre
Storage	\$546,143	\$353,233	0.4587	acre
Parking Lot	n/a	\$650,387	0.2309	acre
Vacant	\$81,192	\$140,430	0.8433	each
Agriculture	\$7,168	\$18,856	0.0321	acre
Range Land & Open Space	\$2,091	\$2,976	0.0085	acre

- (a) and (b) values derived from an analysis of the 2021 Placer County Assessor records.

Summary of Risk and Replacement Factors

Per Equation 1, the relative special benefit for each property type (the “SFE” or “Single Family Equivalent” Benefit Units) is determined as the product of the normalized Fire Risk Factors and the normalized Structure Replacement Value Factors. Table 7, below, summarizes the benefit for each property type.

Note that to derive an actual Assessment amount, each of these values needs to be then multiplied by the parcel specific Fire Hazard Zone Risk Factors and Proximity (Travel Time) Risk Factors in Tables 8 and 9, below.

Table 7 – Benefit Summary per Property Type

Property Type	Fire Risk Factors	Replacement Cost Factors	SFE Factors	Unit
Single Family	1.0000	1.0000	1.0000	each
Multi-Family	2.3220	0.2530	0.5875	res unit
Commercial/Industrial	5.2150	0.5550	2.8943	acre
Office	1.5524	1.3078	2.0302	acre
Storage	13.0438	0.4587	5.9837	acre
Parking Lot	0.3179	0.2309	0.0734	each
Vacant	0.3179	0.8433	0.2681	each
Agriculture	1.2310	0.0321	0.0396	acre
Range Land & Open Space	0.0935	0.0085	0.0008	acre

Residential Properties

All improved residential properties with a single residential dwelling unit are assigned one Single Family Equivalent or 1.0 SFE. Residential properties on parcels that are larger than one acre receive additional benefit and are assigned additional SFEs on an “Agricultural/Rangeland” basis. Detached or attached houses, zero lot-line houses and town homes are included in this category.

Properties with more than one residential unit are designated as multi-family residential properties. These properties benefit from the Services in proportion to the number of dwelling units that occupy each property. The relative benefit for multi-family properties was determined per Equation 1 to be 0.5875 SFEs per residential unit. This rate applies to condominiums as well.

Commercial/Industrial & Office Properties

Commercial and industrial properties are assigned benefit units per acre, since there is a relationship between parcel size, structure size and relative benefits. The relative benefit for commercial and industrial properties was determined per Equation 1 to be 2.8943 SFEs per acre. The relative benefit for office properties was determined per Equation 1 to be 2.0302 SFEs per acre.

Vacant and Undeveloped Properties

The relative benefit for vacant properties and stand-alone parking lots was determined per Equation 1 to be 0.2681 SFEs per parcel.

Rangeland & Open Space Properties

The relative benefit for range land & open space properties was determined per Equation 1 to be 0.0008 SFEs per acre. (This group includes TPZ parcels.)

Agricultural Properties

The relative benefit for agricultural properties requires additional analysis, as required by Government Code 50078 *et seq* and the unique aspects of agricultural properties within the boundaries. This analysis considered how agricultural operations may mitigate risk, onsite or proximate water availability, response time, capability of the fire suppression service, and any other factors which reflect the benefit to the land resulting from the fire suppression service provided. Agricultural properties have been analyzed for fire risk and replacement cost per Equation 1. The relative benefit for agricultural properties was determined per Equation 1 to be 0.0396 SFEs per acre.

Other Properties

Properties that do not fit within the major categories described above have been individually reviewed and the special benefit has been individually calculated. These properties are primarily mixed-use properties with the relative special benefit calculated from the relative proportion of each of the underlying property uses.

Article XIID, Section 4 of the California Constitution states that publicly owned properties shall not be exempt from assessment unless there is clear and convincing evidence that those properties receive no special benefit.

All public properties that are specially benefited are assessed. Publicly owned property that is used for purposes similar to private residential, commercial, industrial or institutional uses is benefited and assessed at the same rate as such privately owned property.

Miscellaneous, small and other parcels such as roads, and right-of-way parcels typically do not have significant risk of fire damage. Moreover, for common area parcels, the fire benefits are assigned to the other improved parcels in the project that share common ownership of the common area. These miscellaneous parcels receive minimal benefit from the Services and are assessed an SFE benefit factor of 0.

3.) Fire Hazard Zone Risk Factors

CAL FIRE works with local agencies to study various fire risk factors throughout rural California including terrain, vegetation, fuel load, wind, weather, etc. and designates specific geographic areas according to fire risk. Within the Assessment Area certain areas are designated as Very High, High, or Moderate as well as areas that do not fall into any of these zones (“None”). Accordingly, parcels receive higher special benefit from the fire protection and emergency response services if they are higher risk zones.

Refer to Appendix A for a diagram of the Fire Hazard Areas in South Placer FPD.

Table 8 shows the normalized Fire Hazard Risk Factor for each fire risk zone.

Table 8 – Fire Hazard Zone Risk Factors

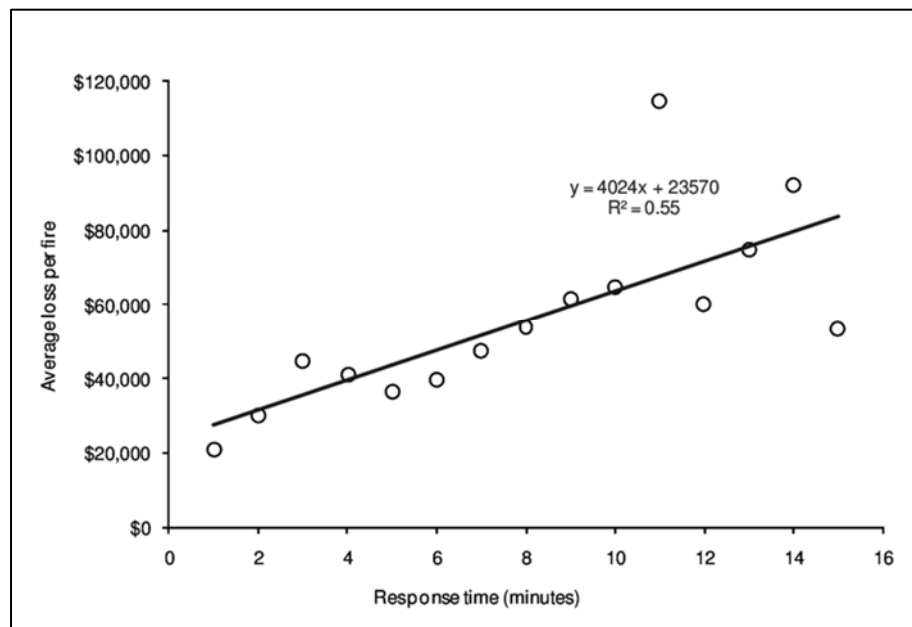
Fire Hazard			
Zone ¹	Score	Impact Effect	Normalization
Very High	2	120	1.29
High	1.2	112	1.12
Moderate	1	110	1.00
None	0	100	0

The Score is relative special benefit conferred for each risk zone. The Impact Factor is the relative weight for this risk factor on the overall special benefit calculation, and is the Score multiplied by 10 and added to the base value of 100.

4.) Proximity (Travel Time) Risk Factors

Timely response is a critical factor in responding to emergency calls to ensure the safety of people and protection of property. Numerous studies have confirmed this well-established understanding and the results of one such study is included with this Report. The graph below shows the linear function relationship ranking between response time and loss in dollars. Accordingly, parcels that are closer to a fire station require a shorter travel time for response, and receive a higher level of special benefit than parcels with a longer travel time.

Travel Time versus Property Loss



Source: Neil Challands "The Relationships Between Fire Service Response Time and Fire Outcomes," Fire Technology, July 2010.

Travel time from the closest of the three fire stations to each parcel was calculated and analyzed using Geographical Information Systems.

Refer to Appendix B for a diagram of the Response Areas Travel Time in South Placer FPD.

Table 9 below shows the relative normalized value of travel time

Table 9 – Travel Time Premium Factor

Travel Time	Score (\$)	Impact Effect	Normalization
<2	43,690	138	1.15
2-4	63,810	126	1.05
4-6	83,930	120	1.00
6-8	104,050	116	0.97
8+	124,170	114	0.95

Assessments Calculation

Each parcel's assessment is calculated by multiplying the assessment rate by the SFE benefit factor (Table 7), fire hazard zone factor (Table 8) and travel time premium factor (Table 9):

Example Calculations

Case #1: Single Family Residence in High Very Hazard Zone with a 2-4 minute Travel Time

Assessment Rate = Annual Base SFE Rate * 1.000 (from table 7) * 1.29 (from table 8)

* 1.05 (from table 9) = 1.35 * Annual Base SFE Rate

Case #2: Single Family Residence in Moderate Hazard Zone with an 8+ minute Travel Time

Assessment Rate = Annual Base SFE Rate * 1.000 (from table 7) * 1.10 (from table 8)

* 0.95 (from table 9) = 1.045 * Annual Base SFE Rate

Case #3: Commercial Property on 2 Acres in High Very Hazard Zone with a 2-4 minute Travel Time

Assessment Rate = Annual Base SFE Rate * 2.8943 (from table 7) * 2 acres * 1.29 (from table 8)

* 1.05 (from table 9) = 7.840 * Annual Base SFE Rate

Case #4: Vacant Lot not in a Moderate Hazard Zone with a <2 minute Travel Time

Assessment Rate = Annual Base SFE Rate * .2681 (from table 7) * 1.10 (from table 8)

* 1.15 (from table 9) = 0.3391 * Annual Base SFE Rate

Annual Base SFE Rate = \$214.16 for 2022-23

Appeals of Assessments Levied to Property

Any property owner who feels that the assessment levied on the subject property is in error as a result of incorrect information being used to apply the foregoing method of assessment or for any other reason, may file a written appeal with the South Placer FPD Fire Chief, or his or her designee. Any such appeal is limited to correction of an assessment during the then current fiscal year. Upon the filing of any such appeal, the Chief, or his or her designee, will promptly review the appeal and any information provided by the property owner. If the Chief, or his or her designee, finds that the assessment should be modified, the appropriate changes shall be made to the assessment roll. If any such changes are approved after the assessment roll has been filed with the County for collection, the Chief, or his or her designee, is authorized to refund to the property owner the amount of any approved reduction. Any dispute over the decision of the Chief, or his or her designee, shall be referred to the South Placer FPD Board of Directors; the decision of the Board shall be final.

Additional Background on Relative Benefit

When property owners decide how to cast their ballot for a proposed assessment, each property owner should weigh the perceived value of the Services proposed to them and their property against the proposed cost of the assessment to their property. If property owners of a certain type of property are either opposed or in support of the assessment in much greater percentages than owners of other property types, this is an indication that, as a group, these property owners perceive that the proposed assessment has relatively higher or lower “utility” or value to their property relative to owners of other property types. One can also infer from these hypothetical ballot results, that the apportionment of benefit (and assessments) was too high or too low for that property type. In other words, property owners, by their balloting, ultimately indicate if they perceive the special benefits to their property to exceed the cost of the assessment, and, as a group, whether the determined level of benefit and proposed assessment (the benefit apportionment made by the Assessment Engineer) is consistent with the level of benefits perceived by the owners of their type of property relative to the owners of other types of property.

Criteria and Policies

This sub-section describes the criteria that shall govern the expenditure of assessment funds and ensures equal levels of benefit for properties of similar type. The criteria established in this Report cannot be substantially modified; however, the Board may adopt additional criteria to further clarify certain criteria or policies established in this Report, or to establish additional criteria or policies that do not conflict with this Report.

Duration of Assessment

It is proposed that the Assessment be levied for fiscal year 2022-23 and continued every year thereafter, so long as the risk of fire on property in the Assessment District remains in existence and South Placer FPD Fire requires funding from the Assessment for improved fire protection and suppression services. As noted previously, if the Assessment and the duration of the Assessment are approved by property owners in an assessment ballot proceeding, the Assessment can be imposed and continued annually after the Board approves an annually updated budget and rate for the Assessment. In addition, the Board must hold an annual public hearing to continue the Assessment.

Assessment Funds Must Be Expended Within the South Placer FPD , Division 2 (Granite Bay) Area

The net available assessment funds, after incidental, administrative, financing and other costs, shall be expended exclusively for Services within the boundaries of the Assessment District, namely, the South Placer FPD area.

Assessment

WHEREAS, the Board of Directors of the South Placer Fire Protection District formed the Fire Protection and Emergency Response Services Assessment District and is proceeding with the proposed levy of assessments under California Government Code sections 50078 et seq. (the “Code”) and Article XIII D of the California Constitution (the “Article”);

WHEREAS, the undersigned Engineer of Work has prepared and filed a report presenting an estimate of costs, a diagram for the Assessment District and an allocation of the estimated costs of the Services upon all assessable parcels within the Assessment District;

NOW, THEREFORE, the undersigned hereby recommends the following assessment to cover the estimated cost of said Services, including incidental costs.

The amount to be paid for said Services and the expense incidental thereto, to be paid by the Assessment District for the fiscal year 2022-23 is generally as follows:

Table 10– Summary Cost Estimate

FISCAL YEAR 2022-23 BUDGET	
Total for Servicing	\$19,272,375
Contribution from Existing Revenue Sources –(Offsets General Benefits)	(\$16,869,107)
Total Allowance for Implementation & Uncollectable Assessments	\$96,250
Total Fire Suppression & Protection Services Budget	\$2,499,518

An Assessment Diagram is hereto attached and made a part hereof showing the exterior boundaries of said Assessment District. The distinctive number of each parcel or lot of land in said Assessment District is its Assessor Parcel Number appearing on the Assessment Roll.

I do hereby assess and apportion said net amount of the cost and expenses of said Services, including the costs and expenses incident thereto, upon the parcels and lots of land within said Assessment District, in accordance with the special benefits to be received by each parcel or lot, from the Services, and more particularly set forth in the Cost Estimate and Method of Assessment hereto attached and by reference made a part hereof.

The assessment is subject to an annual adjustment tied to the Consumer Price Index-U for San Francisco-Oakland-Hayward as of December of each succeeding year (the “CPI”), with a maximum annual adjustment not to exceed 3%.

Each parcel or lot of land is described in the Assessment Roll by reference to its parcel number as shown on the Assessor's Maps of Placer County for the fiscal year 2022-23. For a more particular description of said property, reference is hereby made to the deeds and maps on file and of record in the office of the County Recorder of Placer County.

I hereby place opposite the Assessor Parcel Number for each parcel or lot within the Assessment Roll, the amount of the assessment for the fiscal year 2022-23 for each parcel or lot of land within the said Assessment District.

Dated: March 28, 2022

Engineer of Work



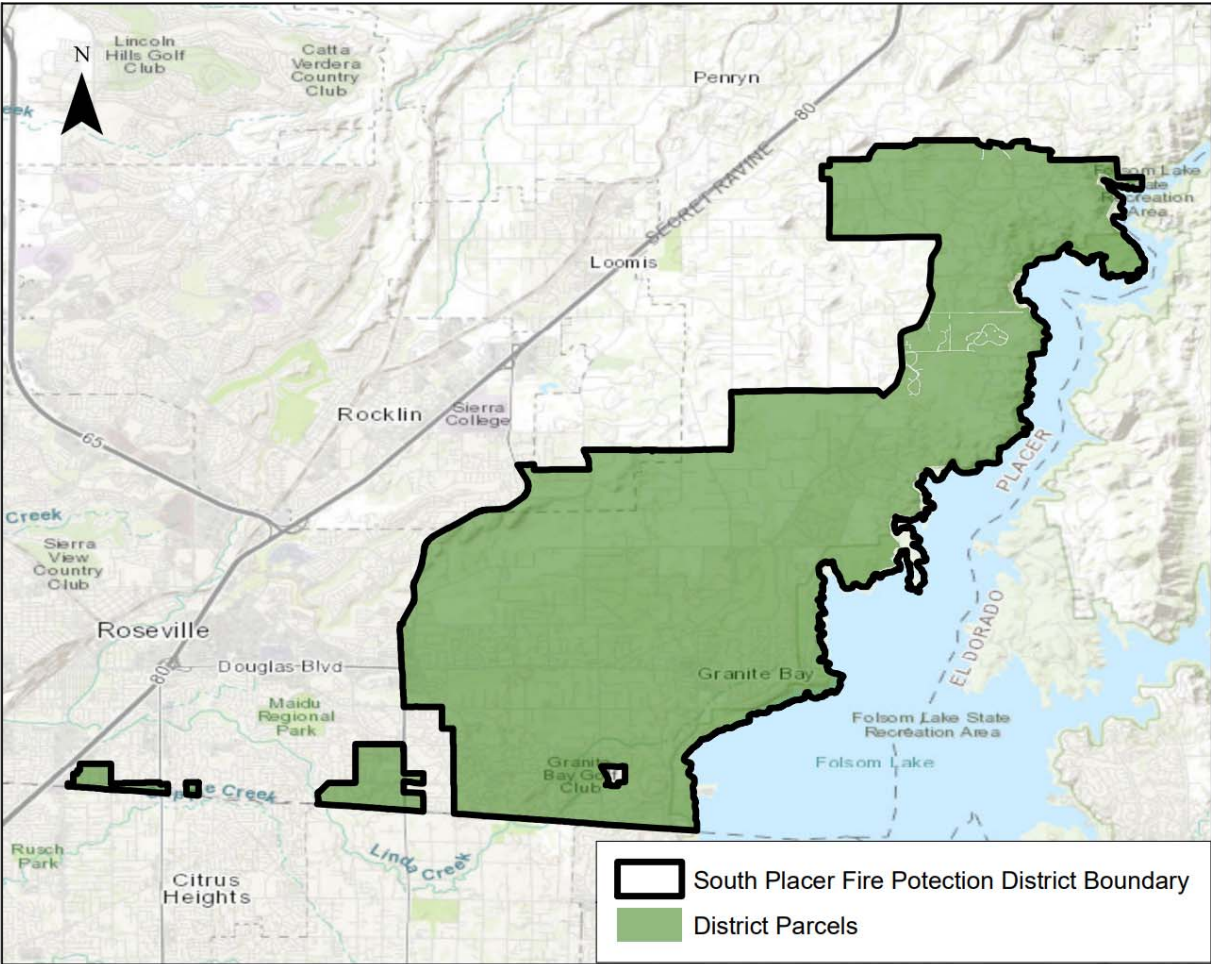
By

A handwritten signature in blue ink, appearing to read "John W. Bliss", written over a horizontal green line.

John W. Bliss, License
No. C052091

Assessment Diagram

The Assessment District includes all properties within the boundaries of the Fire Protection and Emergency Response Services District. The boundaries of the Assessment District are displayed on the following Assessment Diagram. The lines and dimensions of each lot or parcel within the Assessment District are those lines and dimensions as shown on the maps of the Assessor of Placer County, and are incorporated herein by reference, and made a part of this Diagram and this Report.



FILED IN THE OFFICE OF THE FIRE CHIEF OF THE
SOUTH PLACER FIRE PROTECTION DISTRICT,
COUNTY OF PLACER,
CALIFORNIA, THIS _____ DAY OF _____, 2022.

CLERK OF THE BOARD

RECORDED IN THE OFFICE OF THE FIRE CHIEF OF
SOUTH PLACER FIRE PROTECTION DISTRICT,
COUNTY OF PLACER
THIS _____ DAY OF _____, 2022.

CLERK OF THE BOARD

Note:
REFERENCE IS HEREBY MADE TO THE MAPS AND DEEDS OF
RECORD IN THE OFFICE OF THE ASSESSOR OF THE COUNTY
OF PLACER FOR A DETAILED DESCRIPTION OF
THE LINES AND DIMENSIONS OF ANY PARCEL SHOWN
HEREIN. THOSE MAPS SHALL GOVERN FOR ALL DETAILS
CONCERNING THE LINES AND DIMENSIONS OF SUCH
PARCELS. EACH PARCEL IS IDENTIFIED IN SAID MAPS BY
ITS DISTINCTIVE ASSESSOR'S PARCEL NUMBER.

SCI Consulting Group
4745 Mangels Blvd
Fairfield, CA 94534
707-430-4300

AN ASSESSMENT WAS CONFIRMED AND LEVIED BY THE
BOARD OF THE DIRECTORS OF THE SOUTH PLACER FIRE
PROTECTION DISTRICT, COUNTY OF PLACER,
ON THE LOTS, PIECES AND PARCELS OF LAND ON THIS
ASSESSMENT DIAGRAM ON THE _____ DAY
OF _____, 2022 FOR THE
FISCAL YEAR 2022-23 AND SAID ASSESSMENT DIAGRAM
AND THE ASSESSMENT ROLL FOR SAID FISCAL YEAR WERE
FILED IN THE OFFICE OF THE COUNTY AUDITOR OF THE
COUNTY OF PLACER ON THE _____ DAY OF
_____, 2022. REFERENCE IS HEREBY MADE TO
SAID RECORDED ASSESSMENT ROLL FOR THE EXACT
AMOUNT OF EACH ASSESSMENT LEVIED AGAINST EACH
PARCEL OF LAND.

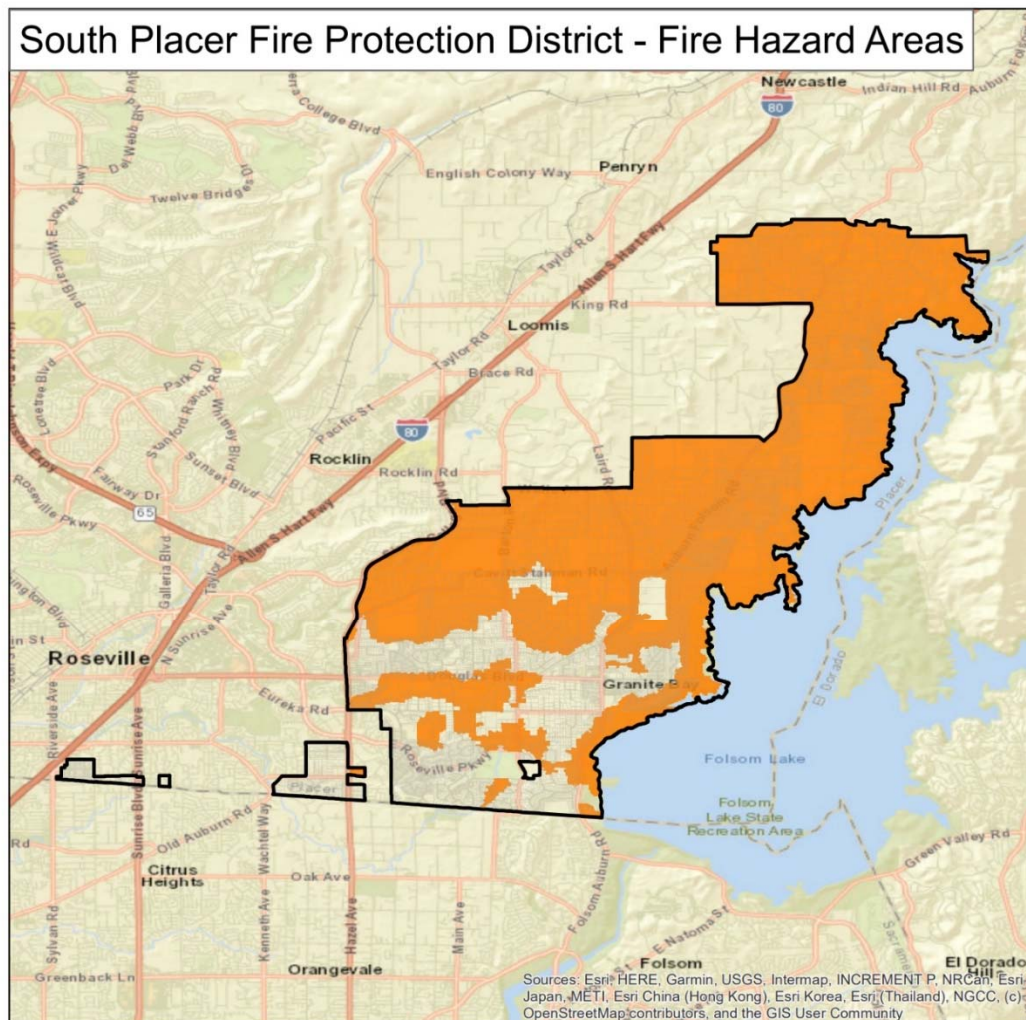
CLERK OF THE BOARD

FILED THIS _____ DAY OF _____, 2022 AT THE
HOUR OF _____ O'CLOCK _____ M. IN THE OFFICE OF THE
COUNTY TAX COLLECTOR OF THE COUNTY OF
PLACER, STATE OF CALIFORNIA, AT THE REQUEST
OF THE BOARD OF THE SOUTH PLACER FIRE PROTECTION
DISTRICT.

COUNTY TAX COLLECTOR, COUNTY OF PLACER

**South Placer Fire Protection District
Fire Protection and Emergency Response Services
Assessment Diagram**

Appendix A – Fire Hazard Areas Diagram



Fire Hazard Zones

- Very High
- High
- Moderate

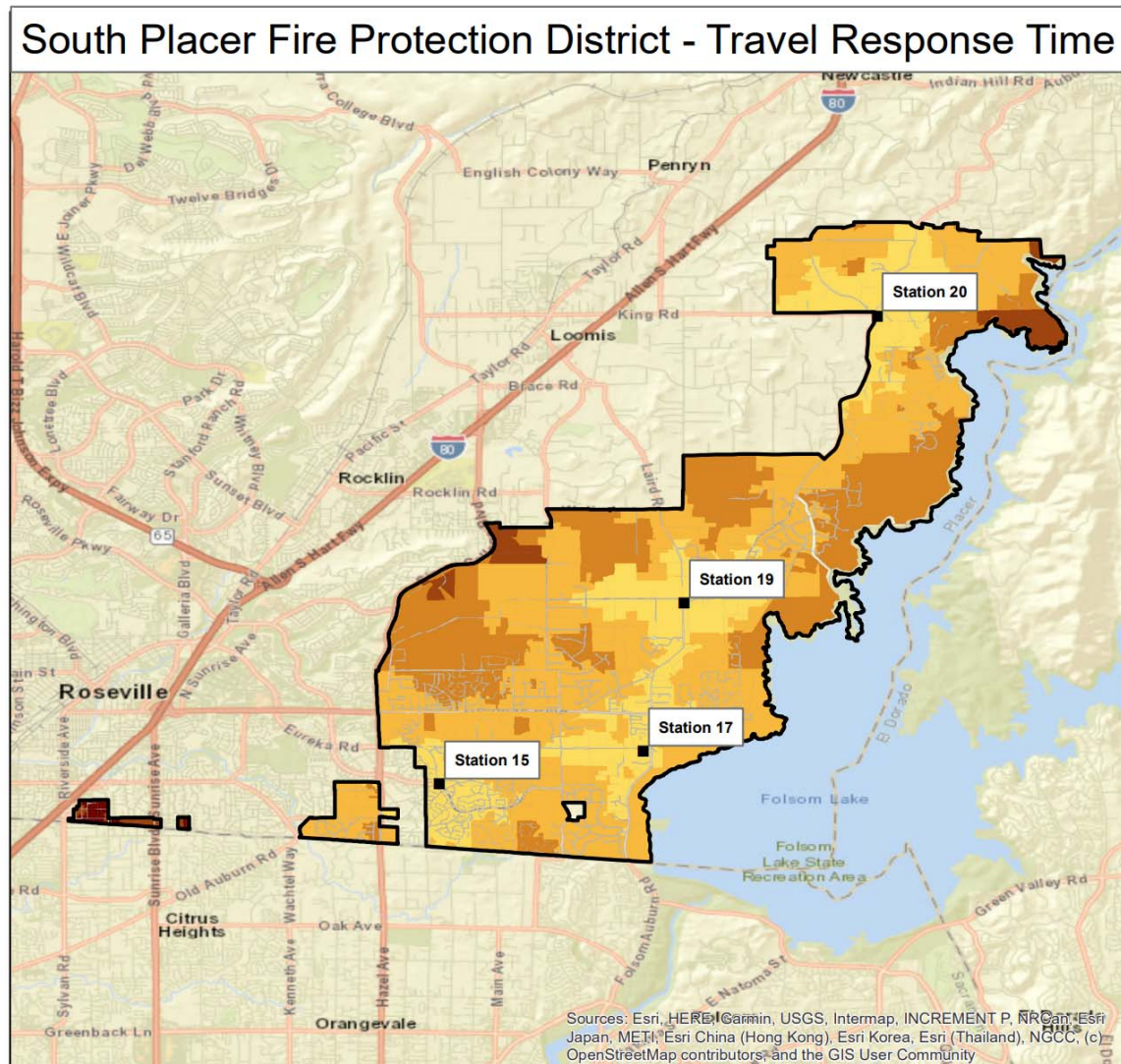


South Placer Fire District Boundary

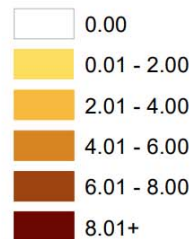


Parcels

Appendix B – Response Areas Travel Time Diagram



Travel Time



South Placer Fire District Boundary

Fire Stations

Roads

Parcels

South Placer Fire Protection District

2022-23 Fire Protection and Emergency Response Services Assessment

Appendix C – Assessment Roll, Fiscal Year 2022-23

The Assessment Roll is made part of this report and is available for public inspection during normal office hours. Each lot or parcel listed on the Assessment Roll is shown and illustrated on the latest County Assessor records and these records are, by reference, made part of this Report. These records shall govern for all details concerning the description of the lots of parcels.

End Notes

¹ Insurance Services Offices Inc. <http://www.rockwall.com/documents/fire/ISO.pdf>

² Institute for Business & Home Safety, “Protect Your Home Against Wildfire Damage,”
<http://www.ibhs.org/publications/view.asp?id=125>

³ *ibid.*, p.2