



# South Placer Fire Protection District

---

NEIGHBORHOOD MEETING

# Agenda

---



Introductions



Intro to  
District



District  
Finances



Ballot  
Measure



Meeting  
Ground Rules

# Introductions

---

Mark Duerr, Fire Chief

---

Kathy Medeiros, Business Manger

---

Sonia Ortega, SCI Consulting Group, Consultant

---

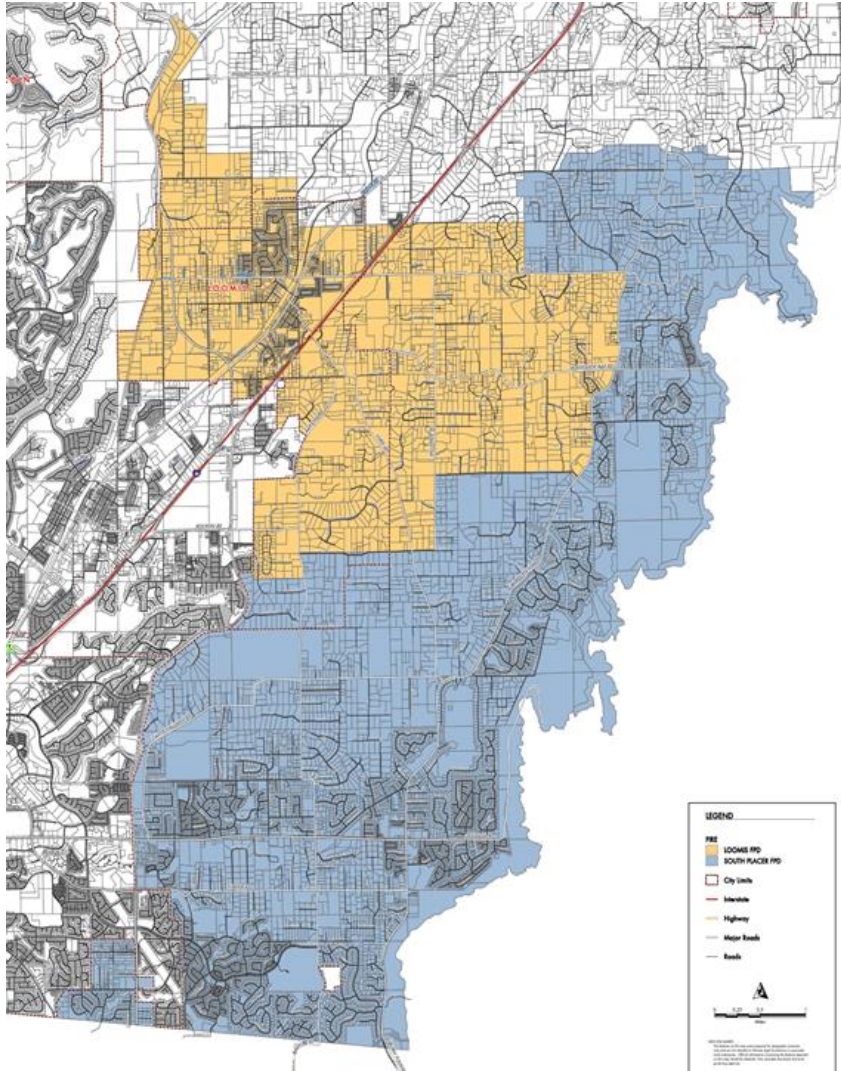
---

---

---

---

---



# South Placer Fire: Global Overview

---

# Intro to the District: Global Overview

---

55 Square Miles

---

3500 Responses

---

6 Stations

---

Four ALS Engines

---

1 Truck

---

2 Ambulances

---

# Intro to the District: Services

---

## Fire Suppression

---

- Structure

- Wildland

---

## Medical Aid

---

- ALS

- Transport

---

## Fire Prevention

---

## Rescue

# Intro to the District: Fire Stations

Station 15

4650 E  
Roseville Pkwy

Station 16

5300 Olive  
Ranch

Station 17

6900 Eureka

Station 19

7070 Auburn  
Folsom

Station 20

3505 Auburn  
Folsom







Station 15 –  
4650 E Roseville  
Pkwy

1 ALS Engine  
1 Grass

3 FF – 1 Medic



Station 16 –  
5300 Olive Ranch  
Road

CLOSED





Station 17 –  
6900 Eureka Rd

1 ALS Truck  
1 Brush  
1 Ambulance

5 FF – 2 Medics

Station 19 –  
7700 Auburn  
Folsom

1 ALS Engine  
1 Grass  
1 Battalion Chief  
1 OES

3 FF – 1 Medic  
1 Battalion Chief







Station 20 –  
3505 Auburn Folsom

1 ALS Engine  
1 Ambulance  
(Cross Staffed)  
1 Brush

3 FF – 1 Medic

Loomis	
Personnel	9
Stations Staffed	1
Apparatus	3
Expenses	13%
Revenues	17%
Call Volume	17%
Parcel Count	4,231
Assess/Benefits	\$380
Transport Unit	0

South Placer	
Personnel	45
Stations Staffed	4
Apparatus	12
Expenses	87%
Revenues	83%
Call Volume	83%
Parcel Count	10,020
Assess/Benefits	\$74
Transport Unit	2





A day in  
the life of  
a SPFPD  
firefighter

---



# District Successes

---

- Community centric, fire-based EMS including transport
- Tax dollars staying in the community
- Response times
- Staffing with three per station
- Grants

# District Challenges

---

Increasing Costs

---

Wildfire Risk

---

Community Growth and Development

---

Population Demographics

---

Employee Retention

---

Increasing Service Demand

---

Risk of Economic Downturn

# Our Goal is to Remain:

- Solvent
- Sustainable
- Independent

Why?

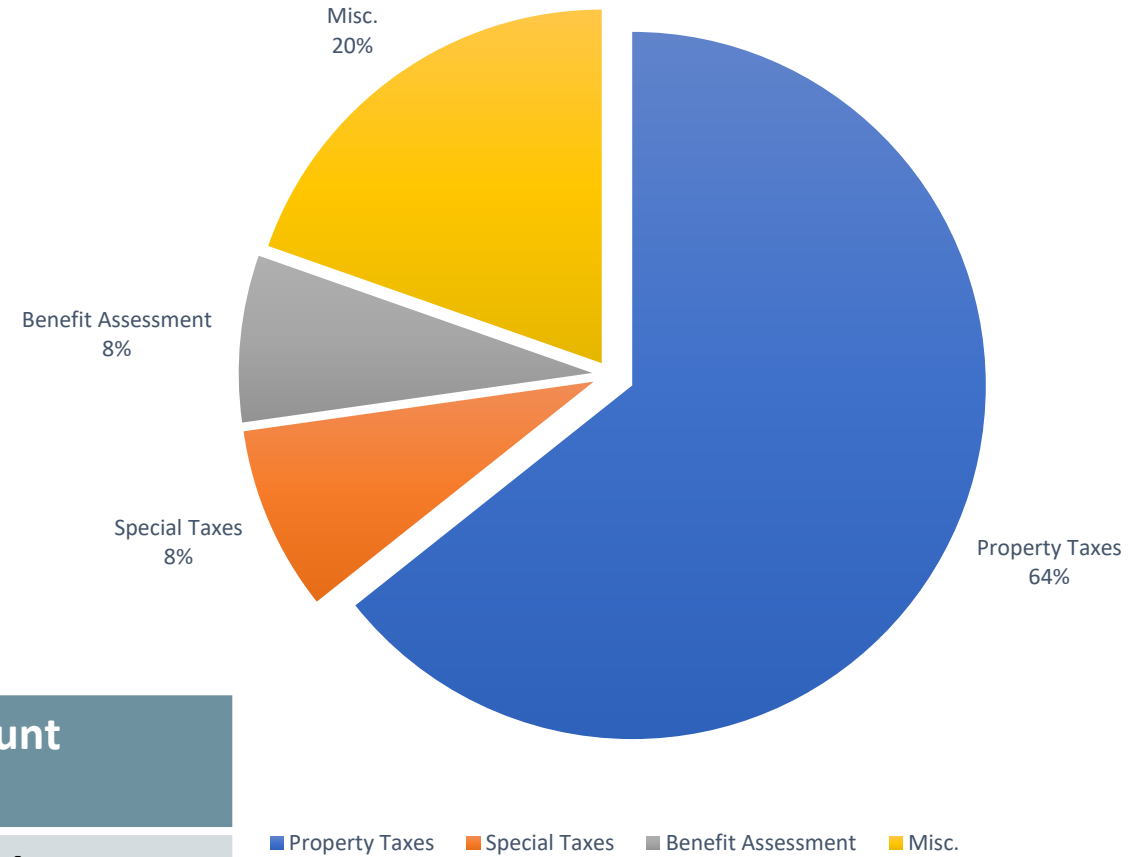
# How will the funds be spent?

---

- Achieving the districts budgeting principles
  - Wages and benefits of 80.25%
  - Service and Operations of 12.5%
  - Apparatus replacement fund of 3%
  - Facilities maintenance and replacement of 3%
  - Fixed Asset allocation of 1%
  - Major Equipment fund of 0.75%
- Fund for contingency, inflation, and economic instability
- Personnel retention and competitive wages
- Facility/Fleet/Major equipment replacement

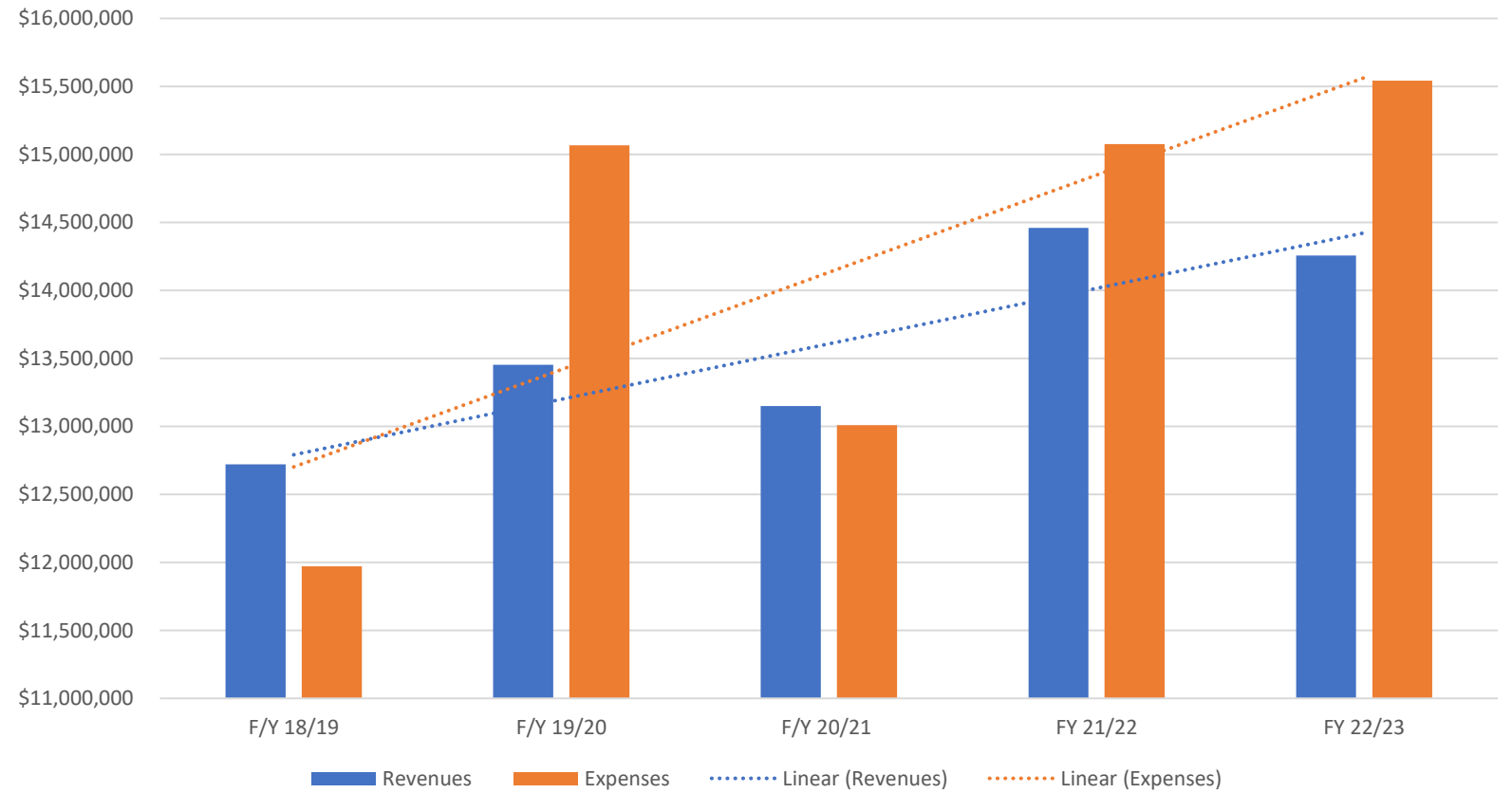


# Funding Sources

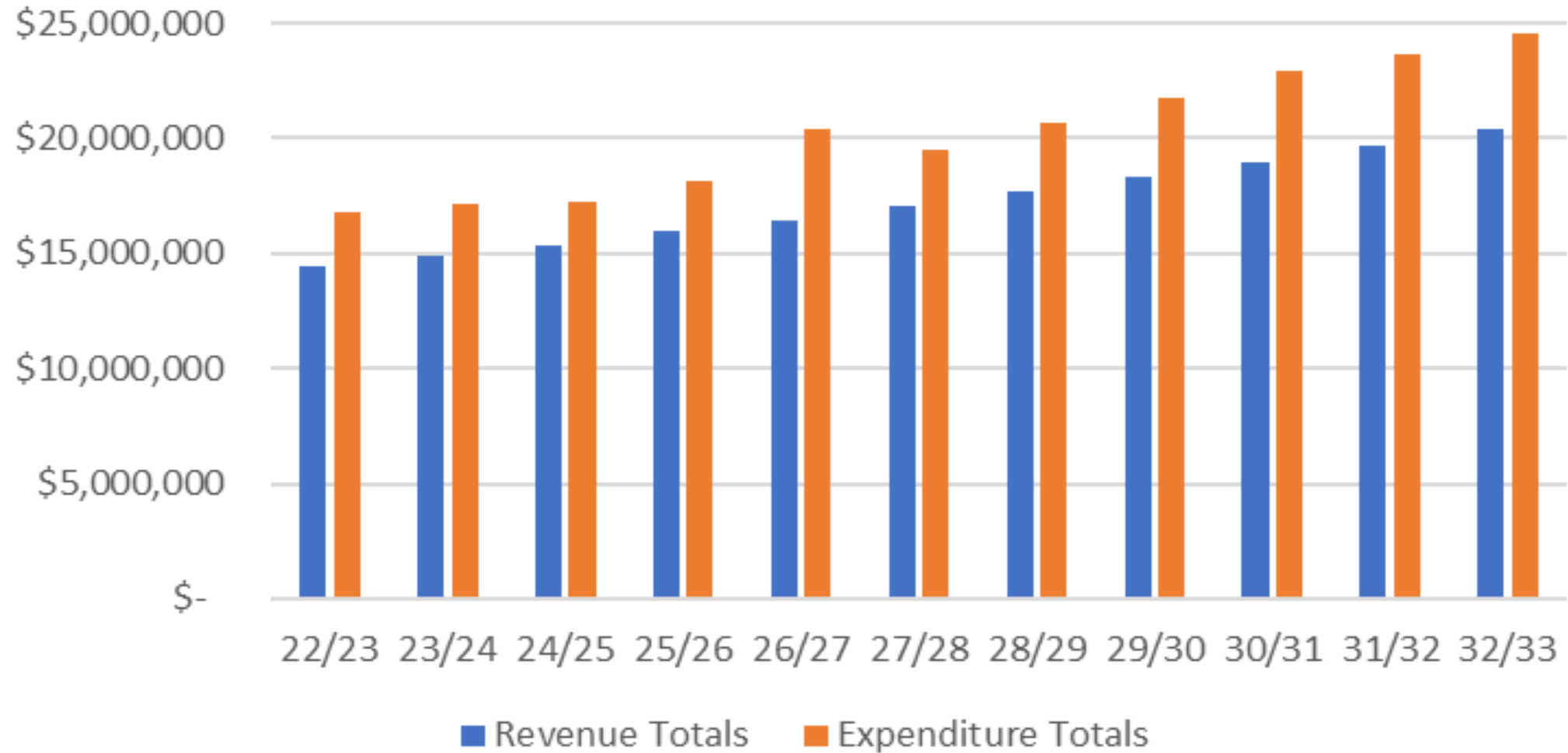


Revenue Source	Amount
Property Taxes	\$9.2M
Special Taxes	\$1.2M
Benefit Assessment	\$1.1M
Miscellaneous	\$2.8M
Total	\$14.3M

# Expenses vs Revenues



## South Placer Fire 10 Year Projections



Budget Year	22/23	23/24	24/25	25/26	26/27	27/28	28/29	29/30	30/31	31/32	32/33
Revenue Totals	\$ 14,429,870	\$ 14,883,726	\$ 15,362,852	\$ 15,935,056	\$ 16,458,406	\$ 17,052,925	\$ 17,672,577	\$ 18,317,948	\$ 18,989,869	\$ 19,687,327	\$ 20,413,045
Expenditure Totals	\$ 16,806,375	\$ 17,177,757	\$ 17,256,337	\$ 18,167,528	\$ 20,395,775	\$ 19,480,127	\$ 20,711,899	\$ 21,714,694	\$ 22,903,245	\$ 23,611,191	\$ 24,569,152

## District Finances – 10 Year Projections

District Parcel count has increased  
2.5X

District Values have increased 6.5X

Property Tax Revenue – Not  
Tracking With Expenses

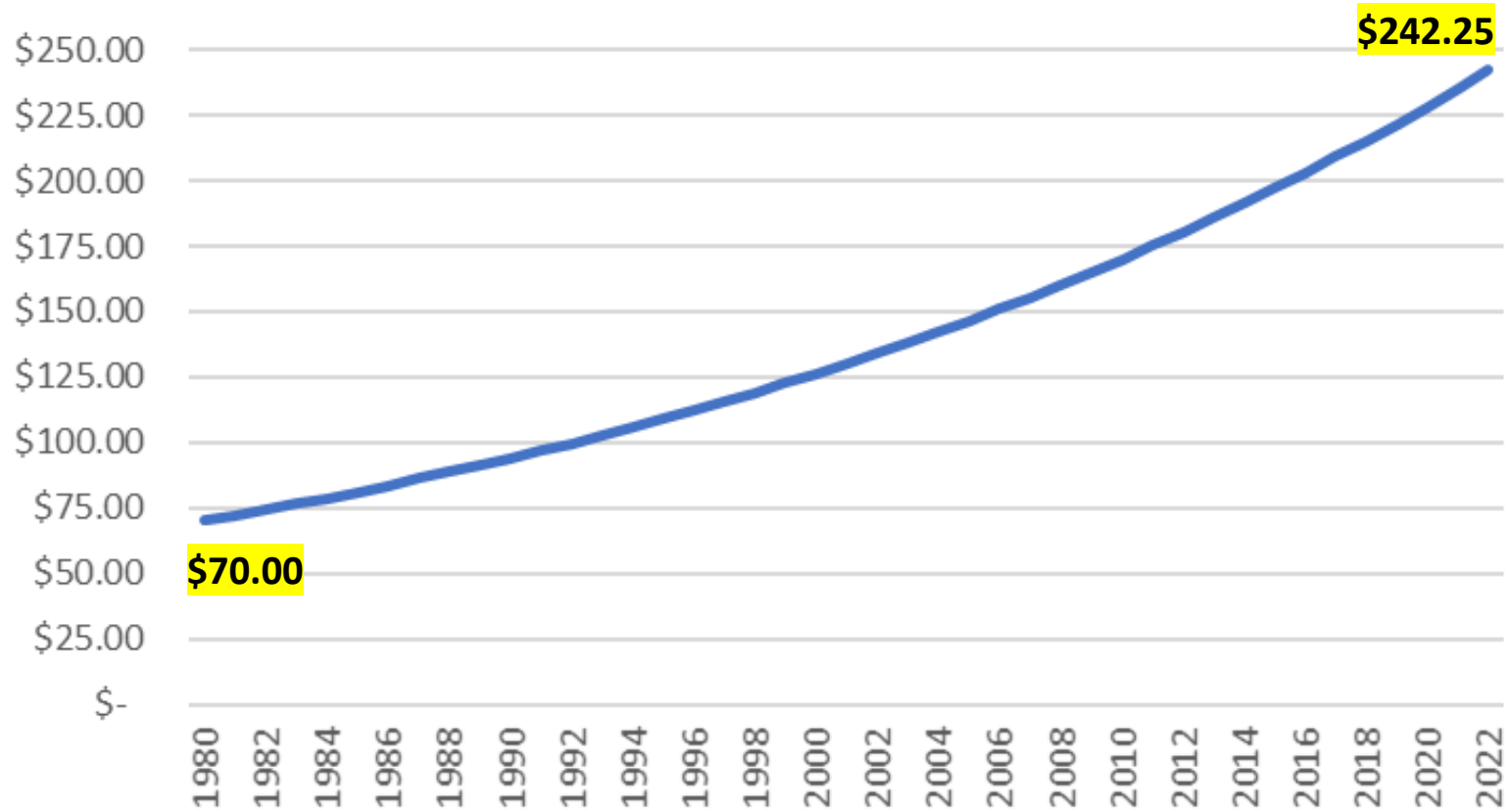
Special Tax = \$70 per parcel – No  
COLA

*1981* - \$298,000

2021 - \$707,966

## District Challenges

### Current Rate, if increased by 3% CPI



### Actual SF CPI 2011-2021

Dec-11	1.52%
Dec-12	2.22%
Dec-13	2.57%
Dec-14	2.67%
Dec-15	3.17%
Dec-16	3.53%
Dec-17	2.94%
Dec-18	4.49%
Dec-19	2.45%
Dec-20	2.00%
Dec-21	4.24%

10 Yr Average CPI: 2.89%



## District Challenges - Personnel

---

60% of Highest Regional Department

---

80% of Average

---

Pay is Lowest in Region for Similar  
Agency

---

People are Leaving for Better Pay

---

Cost of Lost Firefighter =  
\$125k/Resignation

# Impact If Measure Fails

---

Reduction in Staffing

---

Increased Response Times

---

Unavailable Resources

---

More Station Closures

---

Home Insurability Jeopardized

---

Merger with Outside District Likely

# Funding Solutions – Prop 218 Benefit Assessment

---

✓ Decided by **property owners** in a mailed ballot proceeding



Requires **weighted majority of returned ballots** (50 +1%)



Assessments are based on type of property, size, and number of dwelling units



The amount of **special benefit** each property receives must be clearly defined in an Engineer's Report



Common local funding option in the State of California



Revenues may be used to:

Fire protection and emergency response services, Build new facilities or make improvements to current property,  
Pay salaries and benefits to District personnel

# Assessment Methodology

---



Fire Risk Factors



Structure Replacement  
Value Factors



Fire Hazard Zone Risk  
Factors



Travel Time Premium  
Factors (*Proximity to  
Fire Station*)

# Rates

---

Property Type	Proposed Rate	SFE Factors	Unit
Single Family	\$ 214.16	1.0000	each
Multi-Family	\$ 125.82	0.5875	res unit
Commercial/Industrial	\$ 619.83	2.8943	acre
Office	\$ 434.79	2.0302	acre
Storage	\$ 1,281.47	5.9837	acre
Parking Lot	\$ 15.72	0.0734	each
Vacant	\$ 57.41	0.2681	each
Agriculture	\$ 8.47	0.0396	acre
Range Land & Open Space	\$ 0.17	0.0008	acre



# Next Steps: Ballot Proceedings

---

- April 20<sup>th</sup> Ballots mailed
- Due by end of Public Hearing June 8<sup>th</sup>
- Your participation is encouraged!





South Placer Fire Protection District  
6900 Eureka Rd.  
Granite Bay, CA 95746

PRESORTED  
FIRST CLASS  
U.S. POSTAGE PAID  
SACRAMENTO, CA  
PERMIT NO. 333

## OFFICIAL BALLOT ENCLOSED

FOR PROPERTY OWNERS IN THE SOUTH PLACER FIRE PROTECTION DISTRICT FOR A  
PROPOSED FIRE PROTECTION AND EMERGENCY RESPONSE SERVICES ASSESSMENT

Property Owner Name  
Mail Address  
Mail City Mail State Mail Zip



South Placer Fire Protection District  
6900 Eureka Rd.  
Granite Bay, CA 95746

### Official Assessment Ballot FIRE PROTECTION & EMERGENCY RESPONSE SERVICES ASSESSMENT BY THE SOUTH PLACER FIRE PROTECTION DISTRICT

- ☐ **YES**, I approve the proposed assessment for Fire Protection and Emergency Response Services.
- ☐ **NO**, I do not approve the proposed assessment for Fire Protection and Emergency Response Services.

Signed \_\_\_\_\_ Date \_\_\_\_\_

*Signature of Record Property Owner, or Authorized Representative*

Print Name \_\_\_\_\_

*I hereby declare, under penalty of perjury, that I am the property owner or owner's authorized representative of the parcel(s) identified on this official assessment ballot.*

#### INSTRUCTIONS FOR THE COMPLETION AND RETURN OF OFFICIAL ASSESSMENT BALLOTS

This assessment ballot may be completed by the persons or firms owning the property or properties identified by parcel number on this ballot. An explanation of who may complete the assessment ballot on behalf of the recorded property owner and additional instructions are provided on the other side of this Official Assessment Ballot.

To be tabulated, assessment ballots **MUST** be received before the end of the public hearing, scheduled on Wednesday, June 8, 2022 at 7:00 p.m. at the regularly scheduled meeting located at 6900 Eureka Rd. Granite Bay, CA 95746. You are invited to attend this Public Hearing.

#### You may return your assessment ballot in the following ways:

- 1) Mail your assessment ballot to the address shown on the enclosed return envelope. Ballots must be received by June 8, 2022.
- 2) Deliver it in person during the June 8, 2022 Public Hearing scheduled for 7:00 p.m. at 6900 Eureka Rd. Granite Bay, CA 95746.

**FOLD SO THAT THIS SIDE IS ON THE INSIDE OF THE FOLD BEFORE PLACING THIS BALLOT IN THE RETURN ENVELOPE**

# Sample Ballot Docs

How can you  
help?

Contact:

Mark Duerr

Fire Chief

South Placer Fire Protection District

Office: (916) 791-7059

Email: [mduerr@southplacerfire.org](mailto:mduerr@southplacerfire.org)

# Questions and Answers